

# ZOE Newsletter



January 2011

## December Meeting Minutes



We

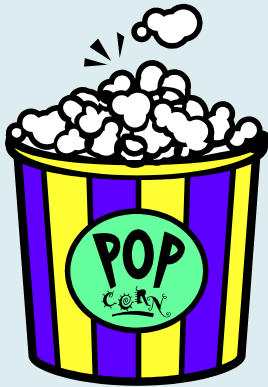
then finished off the meeting with the white elephant gift game which was a lot of fun for everyone.

This month's meeting started at 6:30 like always, and, like always, it was a blast! Joey started us out with prayer then we went straight to the food. We had a huge dinner with tons of food that was almost gone after everyone had gotten their hands on it. We continued and did prayer requests, the ZOE song and verse, and announcements.

## JANUARY MEETING - 2010 ZOE TALENT NIGHT

Our annual ZOE Talent Night will be held on January 18, 2011, 7:00 p.m. at Eastside Community Church. The talent show is for ZOE teens only. Please limit each presentation to around 3-5 minutes. Bring all the equipment that you will need for the Talent Show. There will be a microphone to use. I will bring a 61 key-keyboard if any teens would like to use it for a performance, but all practice should be done at home, or you are welcome to bring your own if you have one. We have also decided to get teens to sign up before hand to make sure we have everything that is needed, plus to make sure we allow enough time once we get started. So please email me back

[www.zoeteens.org](http://www.zoeteens.org) with the talent you will be performing. Tables will be available for siblings to display their talent or teens that would prefer to display a picture or other items that present their talent. We look forward to seeing you at the Talent Show!



### ZOE REFRESHMENT TIME

Our refreshment volunteers for January are: Deborah McCully, Cheryl Ramskill, Tina Fillmer

### January Social



Our social this month will be bowling. We will meet at Carolina Bowling Lanes in Matthews on January 28 at 12:50 and will bowl until 3:00pm. The cost is \$6.00 per person and it includes 2 games, and shoe rental.

### 2010 ZOE GRADUATION MEETING

The next graduation meeting will be held on January 13, 2011 at Fuddruckers in Matthews at 7:00 p.m. One parent of each senior should attend. Seniors are encouraged to attend if their schedule allows.





## YEARBOOK PICTURES

We will be taking pictures for the ZOE yearbook during the January meeting. All teens and siblings should have their pictures made to be placed in the yearbook

## Drivers Ed Class

CMS/Jordan Driving School is offering Two home school Driver Education Classes in January. You must choose the location you would like to attend.

You must email me:

- The location
- Your student's name
- Date of Birth ( MUST BE 14 !/2 THE DAY CLASS BEGINS)
- Your contact Number.

[cleejds@bellsouth.net](mailto:cleejds@bellsouth.net)

You must bring: Birth Cert, Paper, Pen and Pencil, Bag Lunch and drink.

Be sure to choose your location.

Location 1. Date: 01/24 Thur 01/28/ 2011, Time: 7:30 am until 2pm ( Must be on Time) You are invited to a Parent Meeting at 7:30 until 8:30 am 01/24 .You will receive a Parent -Teen Training Manual. Please RSVP Point of Grace Good afternoon, 20700 N. Main Suite 104 Cornelius, NC 28031



*Location 2. Date: 01/24 thur 01/31 (NO Class ON Thursday the 27th) You are Invited to a Parent Meeting at 7:30 until 8:30 am 01/26. You will received a Parent-Teen Training Manual. Please RSVP Joy Christian Fellowship 11515 Idlewild Road Matthews, NC 28105 Thanks, Charles Lee CMS/ JDS Driver ED.*

*Charles Lee*

*Jordan Driving School, Inc*

*704-566-9900*

*704-779-9253*

*[clee.jds@bellsouth.net](mailto:clee.jds@bellsouth.net)*

### *Union Symphony Youth Orchestra - Winter Concert*

*Please join the Union Symphony Youth Orchestra, as it presents its annual Winter Concert on Monday, January 10th. The concert will take place at Marvin Ridge High School, and will be FREE admission. An art exhibit and sale will begin at 6:30, with all proceeds benefiting the Youth Orchestra. The concert begins at 7:30 PM. A dessert reception will follow the concert.*

*Visit [usyo.org](http://usyo.org) for more details.*



*Educational/cheap fun at the Mint Museums - painting, movies, family fun*

*There are several educational and inexpensive events for families/adults coming up at the Mint Museums in the next few weeks.*

*Tuesday, January 11th: Music & Movies at Mint Museum Uptown*

*Sunday, January 16th: Sundays Fun Days for families at Mint Museum Uptown (repeats on 3rd Sunday of every month)*

*The arts activities are free with museum admission. The music & movie is free for members, and \$5 for non-members.*

*Music & Movies @ The Mint Tuesday, 11 January | 6:00 – 9:00 p.m.*

*|Mint Museum UPTOWN*

*Film admission: members/free, non-members/\$5*

*Visit the Mint Museum Uptown for live music and movies! Warm up with jazz by Tony Hayes at 6:00 p.m., followed by this month's movie selection, Encounters at the End of the World, an intriguing documentary about the McMurdo community of Antarctica.*

*Sunday Fun Days: Glass Magic Sunday, 16 January | 1:00 – 4:00 p.m.*

*| Mint Museum UPTOWN*

*Free with Admission*

*Third Sundays are family time at the Mint Museum Uptown! Every Sunday Fun Day, children and families can try out a new scavenger hunt in the museum galleries, watch a performance or artist demonstration, and enjoy kid-friendly activities. This month, go on a family tour to view glass sculptures, make a sparkling sun catcher, and explore color and light at the Colorama Booth with Discovery Place ScienceReach specialists.*

## *Spring Baseball for Homeschooled High School Boys*



*There is still an opportunity to register for Charlotte Stampede Baseball for High School. We have a Junior Varsity and a Varsity Team for High School.*

*This month, we are holding administrative 'open house' type meetings to complete all registration paperwork and get uniform sizes finalized.*

*Players will need to attend to be able to try on uniform jerseys and be sized for hats. This will ensure that we order correct sizes for their uniforms. Payment for uniform is due at this meeting. Uniforms must be ordered by Jan. 22 to ensure delivery before the season starts.*

*In addition to the uniform fee, we require a \$50 deposit toward season fees for all players is to be paid at this meeting.*

*For more details and registration paperwork, contact us at [charlottestampede@yahoo.com](mailto:charlottestampede@yahoo.com).*

*You can also visit our website [www.charlottestampede.org](http://www.charlottestampede.org) for information about our organization.*

*Please plan to attend ONE of the following meeting dates:*

*Saturday January 15--10am-12pm*

*First Baptist Church of Matthews  
185 S. Trade Street  
Matthews, NC 28105*

*Saturday January 22--10am -12pm*

*Panera Bread  
Shops at Northcross  
9905 Knockando Drive  
Huntersville, NC 28078  
(Shopping center behind Target on Hwy 73, east of 177 at exit 25.)*

*You may come any time during the 10am-12pm time frame. Board members will be available answer any questions you may have.*

## *Homeschool Workshops at Historic Latta Plantation!*

*Bringing History To Life!*

*Details...*

**\*\*\***

### *Open Hearth Cooking Workshops*

*February 8 (10am-2pm) and February 15 (10am-2pm), 2011*

*Learn the basics of open-hearth cooking and work with period recipes. Participants will prepare a meal and enjoy it together. Ages 10 and up only (all students must be accompanied by one adult- total cost for both is \$30.)*



### *Everything Bees Workshop*

*February 24, 2011 (10am-1pm)*

*Learn about the world of honeybees, why they were important on 19th century farms, and their role in agriculture today. Make a craft, beeswax candles, and beeswax lip balm. For ages 7-12, cost is \$15 per student.*



### *Farm Kids Workshop*

*March 15, 2011 (10am-12pm)*

*Step back into a 19th century farm as you get up close and personal with the Latta animals, participate in farm chores, learn about life in a cabin, and make a craft. For ages 5-7, cost is \$10 per student.*



### *To Make a Lady Workshop*

*March 24, 2011 (10am-1pm)*

*Learn the ins and outs of being a 19th century lady. From etiquette and stitches, to keeping a household, and more! For girls ages 13 and up, cost is \$20 per student.*



### *Backcountry Woodsman Workshop*

*May 26, 2011 (10am-1pm)*

*Learn how to survive as a 19th century backcountry man. Hands-on activities include fire-starting with flint and steel, woodworking, and more! Participants will make a woodworking project to keep. For boys ages 13 and up, cost is \$25 per student.*



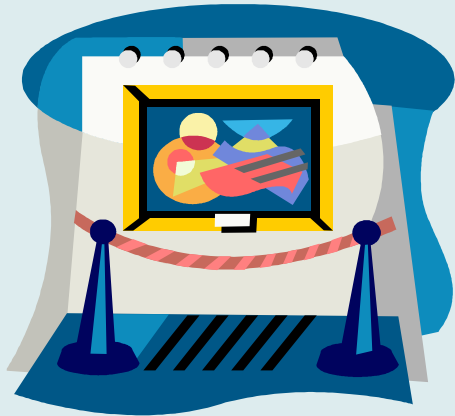
### *About Historic Latta Plantation*

*Historic Latta Plantation, once a successful cotton plantation, is now an historic farm. Costumed interpreters, historic displays and hands-on activities allow visitors to experience what life was like for the planters, yeoman farmers, and enslaved African-Americans of the North Carolina backcountry in the early 19th century. Historic Latta Plantation features the home of James Latta, built ca. 1800, as well as original and replica outbuildings and historically appropriate farming practices and livestock. Historic Latta Plantation is owned by Mecklenburg County Parks and Recreation and administered by Latta Place, Inc. It is funded in part by Mecklenburg County Parks and Recreation and the Arts and Sciences Council.*

### *Directions*

*Historic Latta Plantation is located on Sample Road, off of Beatties Ford Road in Huntersville, NC. Traveling from Charlotte on I-77 North, take exit 16B (Sunset Road West,) make a right at the 2nd light onto Beatties Ford Road, continue on Beatties Ford Road for approximately 5 miles and make a left onto Sample Road. Historic Latta Plantation is located at the end of Sample Road. From the north on I-77 South, take exit 23 (Huntersville). Turn right off of the exit onto Gilead Road. Take the third left, McCoy Road. At the stop sign,*

turn right on Beatties Ford Road. Turn left onto Sample Road.  
Homeschoolers invited Jan. 26 for special activities at the Virginia Living Museum



### The Virginia Living Museum

The Virginia Living Museum in Newport News will open its classroom doors to homeschoolers on Wednesday, Jan. 26 with a selection of fun and engaging classroom programs that highlight important natural science and earth science concepts for elementary and middle school grades. "Only

at the VLM can your homeschooled students meet live animals, handle museum quality specimens, experiment with real scientific equipment and more while learning about the fascinating world around us!" says Museum Education Director Chris Lewis.

Natural science programs introduce young students to the rich variety of life in the Chesapeake Bay, while older students can study animal survival and animal skeletons. Space science programs in the planetarium are available for all ages as students explore the interconnections of the Earth, moon and sun, how colonial navigators used the stars, the weather on different planets and Galileo's groundbreaking work with the telescope. Students in grades 5-12 can explore with the microscope or learn about Vertebrate Biology during 90-minute environmental science labs.

The museum's science education programs have been endorsed by the Virginia Department of Education, the U.S. Department of Education, and the National Science Foundation.

The museum offers Homeschool families extra deep discounted rates for

*this one-day-only program. Natural science and planetarium programs are \$8.25 per child and include a free visit to the museum. The environmental science lab is \$10.25 per child and also includes a free visit to the museum. Parents may accompany children into the programs at no additional charge. Museum member parents are free. Non-member adults are \$14.*

*Advance registration is required. Call 757-595-9135 or visit [www.thevlm.org](http://www.thevlm.org) for information and to register. Free curriculum support materials will be provided when registered for classroom programs.*

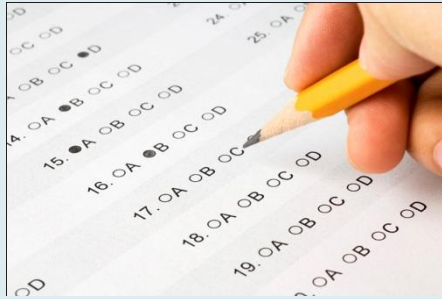
*Virginia's natural heritage comes alive at the Virginia Living Museum. The museum introduces visitors to more than 250 living species native to Virginia through exhibits, discovery centers and interactive hands-on exhibits. From Deep Space to the Deep Sea, and everything in between, the Virginia Living Museum has it covered!*

*The museum is located at 524 J. Clyde Morris Blvd., Newport News, 1-64, exit 258A.*

*Winter hours are 9 a.m. to 5 p.m. Monday through Saturday and noon to 5 p.m. on Sunday.*

*For more information visit the museum web site at [www.thevlm.org](http://www.thevlm.org) or call 757-595-1900.*

## Speech and SAT/ACT prep



*Shanan Classical Tutorials, which meets at Spirit of Joy Church in Weddington, has added 2 second semester classes. These classes start on Mon., 1/10 and run for 17 weeks (spring break after Resurrection Day). Check out more information on the web site: [www.shananclassical.com](http://www.shananclassical.com).*

*www.shananclassical.com.*

*Speech, Mondays, 8-9:15, taught by Robin Hancock, \$85*

*SAT/ACT Prep, Wednesdays, 1:30-2:45, taught by Jeff Harris, \$120  
(meets only 15 weeks)*

*If you are interested, please RSVP email back at this address to verify taking the class and for a registration form which can be brought to class on Monday. Registration is \$45 for one class and \$50 for 2 classes.*

## *BLESSED Homeschool Meeting*

*BLESSED Group Offers help for learning challenged home schooled students. This group, which is sponsored by the WWHEAT-CHEA group, exists to encourage and educate parents who home school children with learning challenges. Sue Martin, an experienced home educator and mother of 8 children (including 3 with learning challenges) leads the group.*

*The next meeting will be Thursday, January 27 at 7:00 pm at the newly purchased New Life Church property at Sue Martin's home: 212 Larkfield Dr. in Weddington (Waxhaw zip 28173). Sue's telephone at home is 704-847-7525.*

*Directions: Just south of the intersection of Hwy. 84 and Providence Rd. at Weddington Corners, take a right off of Providence Rd. onto Weddington Church Rd. After 1/4 mile turn left onto Larkfield Dr. (a gravel road) and continue to the very end. Our house is on the right and you can park in the cul-de-sac. Sue Martin's cell phone number is 704-577-2197.*

*This month we are happy to have Pamela Bashor, CCC-SLP, coming to speak to us. Pam opened THE CENTER FOR SPEECH EXCELLENCE in Charlotte so far back that Sue Martin was using her as a speech/language therapist for her kids in 1997! In Pam's words, she will give a "brief overview of speech and language disorders and their effects on literacy and academic success", plus there will be time to ask her questions about specific concerns you may have in your own family.*

*The evening is sure to be a source of encouragement and lots of useful information for many in our homeschooling community. Mark your calendars now so you don't forget the date! We are very BLESSED that Pam is giving up an evening to come and help us understand this important piece in our children's learning process.*

*The next meeting will be the last Thursday of March 2011.*

### *Homeschool PE at Mallard Creek Rec Center*

#### *PE Classes (All Age Groups)*

*Mallard Creek Recreation Center is offering homeschool PE classes, taught by Mallard Creek staff, in conjunction with our Enrichment Tuesday classes. The cost is \$50 per child and the schedule is as follows:*



*K-2nd grade (barcode 17967): 11 a.m. to noon, minimum # of students 5, maximum # of students 25*

*3rd - 5th grade (barcode 17968): 1 p.m. to 2 p.m., minimum # of students 5, maximum # of students 25*

*6th - 8th grade (barcode 19470): 2 p.m. to 3 p.m., minimum # of students 5, maximum # of students 25*

*9th - 12th grade (barcode 19469): noon to 1 p.m. minimum # of students 5, maximum # of students 25*

*Registration for the PE classes is being handled separately from the registration for the enrichment classes.*

*In order to register for PE, you may either:*

- Call or come by Mallard Creek Recreation Center or*
- Call 311 or*
- Go to [www.parkandrec.com](http://www.parkandrec.com) and register through the E parks system.*

## *Riderschoice Homeschool Ski and Snowboard Season 2010-2011*



*IF YOU KNOW OF OTHER HOME SCHOOL FAMILIES WHO WOULD BENEFIT FROM THIS PROGRAM, PLEASE SHARE THIS INFORMATION. The Riderschoice ski rates are open to all homeschool families (from all states).*

*Riderschoice Homeschool Ski and Snowboard Blog has been updated for 2010-2011 Ski Season. Go to [www.riderschoice.blogspot.com](http://www.riderschoice.blogspot.com) for all of the updates, instructions, and Riderschoice rules.*

### *RidersChoice*

*RidersChoice is the weblog for homeschooling families with all the information about skiing and boarding in Western North Carolina. For the 2010 - 2011 winter season we have many options to choose from. Once on the blog please Scroll ALL the way DOWN and READ ALL of the information before making a decision or before sending an email question. :)*

*Sugar will not allow Riderschoice to ski on Fri. of this year. Almost every Wed. we will be skiing. In addition to many Tues. Below are all of the dates that we have posted so far this season. March dates will be posted ASAP.*

*Please remember that homeschoolers may bring as many guest with them as they want to Riderschoice ski dates, guest must be registered with the legal homeschooler and must check in at the lodge with that homeschooler. So, bring your friends, relatives, and grown (non-homeschooling) adult children. Make sure guest know the group rules!*

*Dates may be added or deleted as needed, please go to the Riderschoice blog ([www.riderschoice.blogspot.com](http://www.riderschoice.blogspot.com)) each time before registering to check for updates.*

*Updated 12-26-2010:*

*Scheduled Ski Dates for Sugar: (weather permitting)*

*Wednesday, Jan. 12th, day ticket, register by Jan. 10th by 8 pm*

*Tuesday, Jan. 18th, day ticket, register by Jan. 16th by 8 pm*

*Wednesday, Jan. 19th, day ticket, register by Jan. 17th by 8 pm*

*Monday, Jan. 24th, day ticket, register by Jan. 22nd by 8 pm*

*Wednesday, Jan. 26th, day ticket, register by Jan. 24th by 8 pm*

*Wednesday, Feb. 2nd, day ticket, register by Jan. 31st by 8 pm*

*Tuesday, Feb. 8th, day ticket, register by Feb. 6th by 8 pm*

*Wednesday, Feb. 9th, day ticket, register by Feb. 7th by 8 pm*

*Tuesday, Feb. 15th, day ticket, register by Feb. 13th by 8 pm*

*Wednesday, Feb. 23rd, day ticket, register by Feb. 21st by 8 pm*

*Make your plans and watch the weather for cold and snowy conditions! Fresh snow on Christmas Day has added to the great base at Sugar!*

*First dates for Sugar Mnt. after the holiday rates: Jan. 3rd, 4th, & 5th (weather permitting).*

*Remember, All dates posted on the blog are weather permitting! Ski season in WNC can be short and unpredictable, so keep that in mind as you make your plans.*

*Please email Riderschoice at ([riderschoicewnc@bellsouth.net](mailto:riderschoicewnc@bellsouth.net)) with questions.*

*Information on the blog from the following Western North Carolina Ski Resorts has been updated for 2011 ski season:*

*SUGAR MOUNTAIN <http://www.skisugar.com/>*

*WOLF RIDGE: [www.skiwolfridgenc.com](http://www.skiwolfridgenc.com)*

*CATALOOCHEE <http://www.cataloochee.com>*

*APPALACHIAN SKI MOUNTAIN <http://www.appskimtn.com/%C2%AO>*

*BEECH MOUNTAIN <http://www.skibeech.com/%C2%AO>*

## **OLD SALEM MUSEUMS & GARDENS** **WINSTON-SALEM, NC**

*HOMESCHOOL DAYS: MUSEUM CLASSES FOR  
HOMESCHOOLERS IN JANUARY AND FEBRUARY 2011*

*CLASS DATES: JANUARY 25 & 27; FEBRUARY 2, 4, 8, 10,  
16, 2011*

*Throughout the year Old Salem Museums & Gardens hosts several special days for the home-educated children. These days are for students to explore and learn about life in 18th and 19th century Salem. Join us in January and February 2011 for a series of classes designed especially for home-educated students.*

*Dates: January 25 and 27; February 2, 4, 8, 10, 16*

*Registration for classes will close at 5pm on the Friday prior to each week's class*

*Classes:*

*Hearth Cooking for ages 5-11*

*1:30-2:30 or 3:00-4:00 \$12.00*

*Learn to cook an apple fritter on the hearth using 19<sup>th</sup> century receipts and cooking techniques.*

*Hearth Cooking for ages 12-18*

*1:30-2:30 or 3:00-4:00 \$12.00*

*Learn how to make Winkler waffles on the hearth and churn butter!*

*Wool and Weaving for ages 5-11*

*1:30-2:30 or 3:00-4:00 \$12.00*

*Learn about processing wool, dyeing with natural materials, and weaving*

*Make a Redware Pot for ages 12-18*

*1:30-2:30 or 3:00-4:00 \$12.00*

*Learn about Salem's potters and make a redware pot on the wheel. Pots will be fired and glazed and can be picked up at the Visitor Center in April (after email notification)*

*Reservations can be made by calling Sales Reservations at 1-800-441-5305.*

*Sorry, no refunds. Reservations will be on a first come basis and are pre-paid. Please phone in early as our spaces for this event fill quickly. Due to limited space in each location, classes are for children only. Adults are invited to shop or tour Salem during the class. Discounted tickets for adults that would like to tour Old Salem while their students are taking a class are \$10 per adult. More info at [www.oldsalem.org](http://www.oldsalem.org)*



# HAPPY BIRTHDAY

## Teens

*Amanda McMakin-January 1*  
*Matthew Clinkscales-January 12*  
*Lilly Marus-January 24*

## Siblings

*Jeremy Burris-January 4*  
*Georgia Irving-January 6*